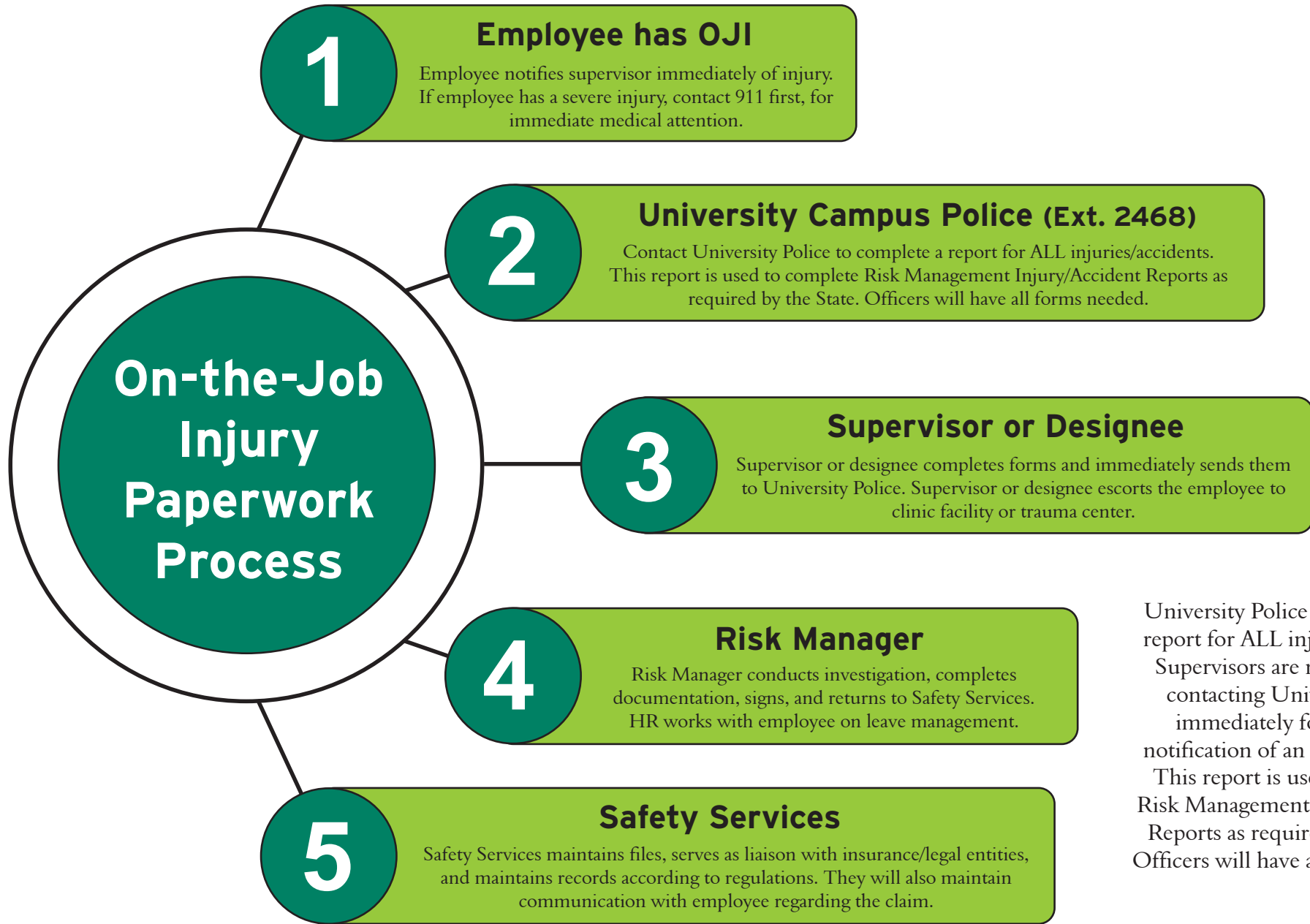


NSU Covers all employees under the Oklahoma Workers' Compensation Law



University Police will complete a report for ALL injuries/accidents. Supervisors are responsible for contacting University Police immediately following the notification of an injury/accident. This report is used to complete Risk Management Injury/Accident Reports as required by the State. Officers will have all forms needed.

(Consolidated Benefits Resources)

CBR will contact you within 2 days about your workers' comp claim.